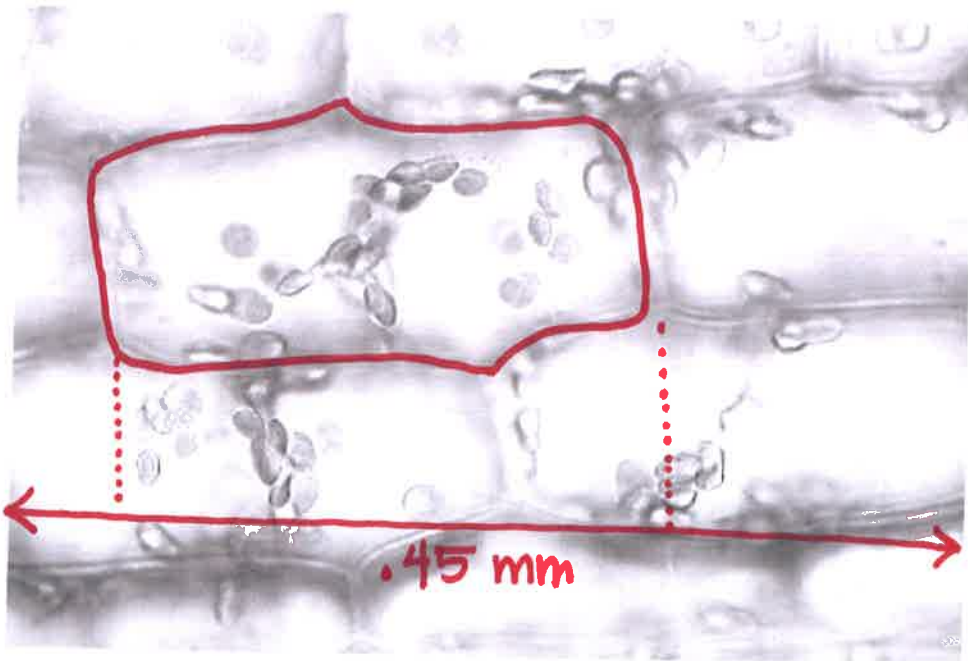


Elodea canadensis

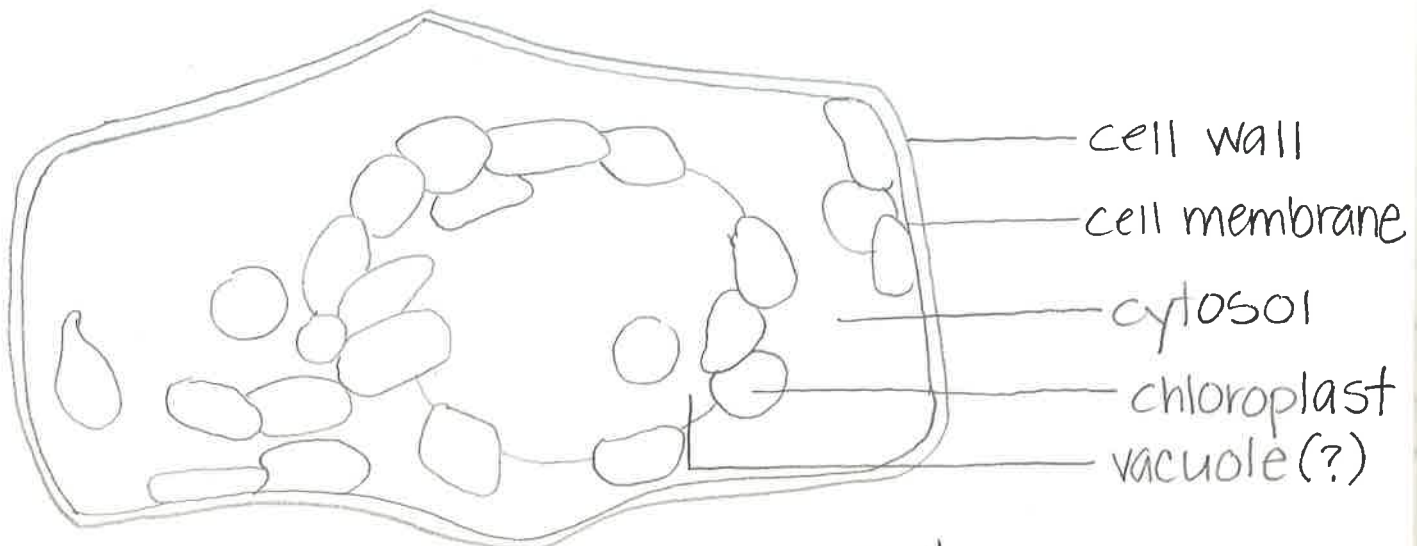


High Power FOV = .45 mm
= 450 μ m

estimate that
1 cell takes up
 $\frac{2}{3}$ of the FOV.

\therefore cell size =
 $(\frac{2}{3})(.45\text{mm}) = .3\text{mm}$

Elodea canadensis



Magnification = $\frac{120\text{mm}}{.3\text{mm}} = 400\times$